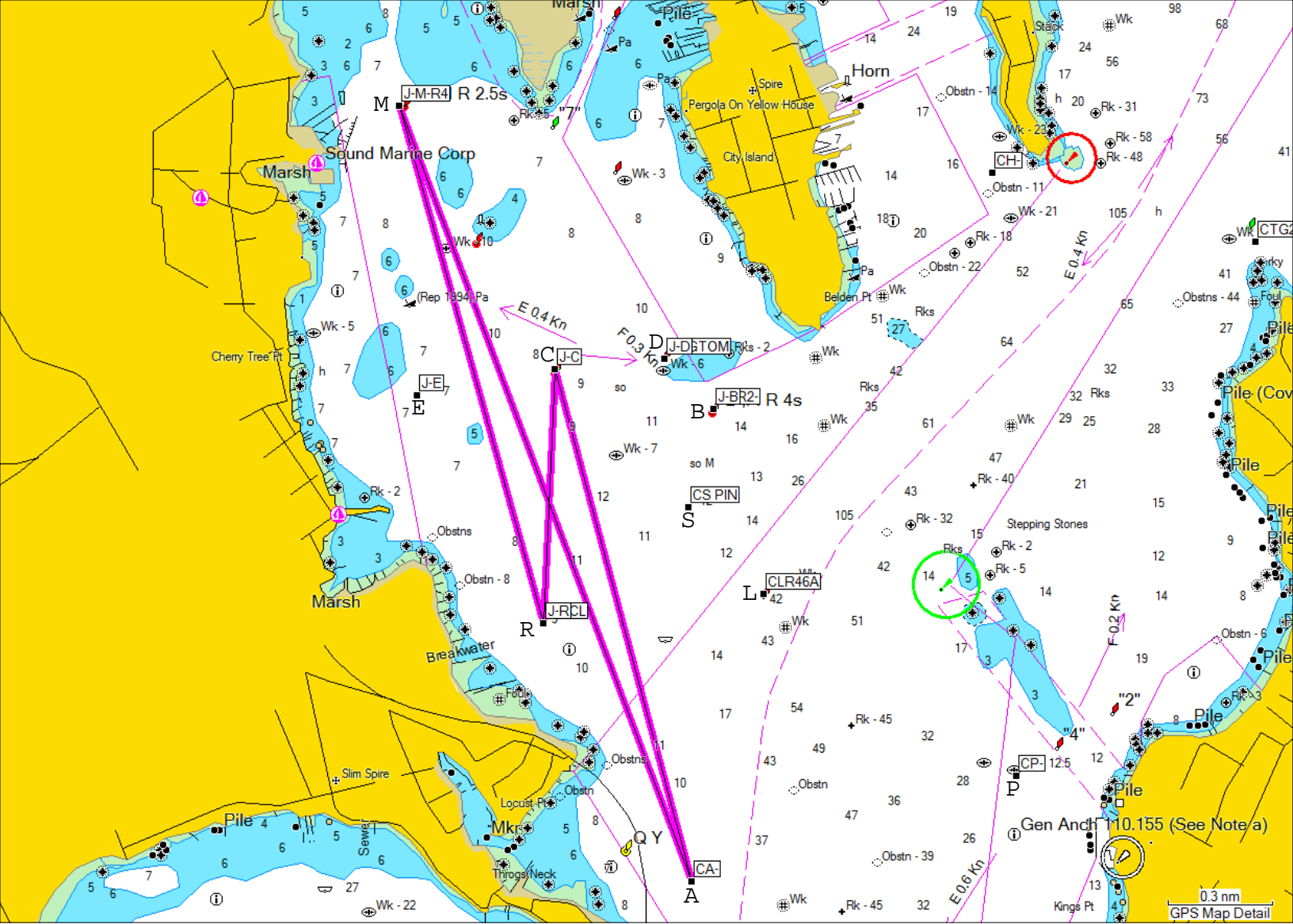


J-24 Fleet 61

Monday Sailing Instructions - 2011

- 1. RULES**
 - 1.1 The Regatta will be governed by the *current* Racing Rules of Sailing.
 - 1.2 This is not a formal race and is not scored, use of the racing rules is for safety and instructional use only.
- 2. NOTICES TO COMPETITORS**
 - 2.1 Notices to competitors will be posted on the fleet group site: <http://groups.google.com/group/j24-fleet-61>
- 3. SCHEDULE OF RACES**
 - 3.1 Monday nights in June, July and August
 - 3.2 Start is at 7pm at the “c” mark
- 4. THE COURSE**
 - 4.1 The course will be announced on VHF channel 71 prior to 7pm.
- 5. MARKS**

A	EBYRA Yellow Race Mark East of Throggs Neck
B	R “2” Big Tom Flasher
C	RG “CL” Flasher South of Cuban Ledge
D	RN “4” Nun at Big Tom
E	EBYRA Yellow Race Mark north of Weir Creek
L	RN “46A” Mid Channel
M	R “4” Flasher NE Corner of Eastchester Bay and the mouth of Hutchinson River
R	EBYRA Yellow Race Mark East of Throggs Neck Bridge Toll Plaza
S	EBYRA Yellow Start mark
- 6. THE START**
 - 6.1 The starting line will be a line perpendicular to the course from “C” to the first mark and approximately 5 boat lengths to either side of “C”.
- 8. THE FINISH**
 - 8.1 The finish will be by rounding “C” leaving the mark to starboard.



Sample Monday Night Course

Signaled:

- A(Alpha) to starboard
- M(Mike) to Port
- R(Romeo) to Port
- Finish back at C(Charlie) to Port

Data and information contained in this Product are © 2002-2007 Her Majesty the Queen in Right of Canada, Canadian Hydrographic Service / Sa Majesté du chef en Canada, Service hydrographique du Canada and/or Nautical Data International, Inc., license no. 240502001-001/2 and 021704-087. Portions may be © United Kingdom Hydrographic Office. . Portions © Lewis Offshore Ltd. 2003-2007. Portions © NLHO 2005-2007. Reproduced with the permission of the Hydrographic Office of the Netherlands and UK Hydrographic Office, license no. NL AC-002-Garmin. Portions © Wavey Line Ltd. 2005-2007. Wavey Line charts are produced, in part, from products and with the agreement of Wavey Line Ltd. All rights reserved. This product has been derived in part from material obtained from the UK Hydrographic Office with the permission of the UK Hydrographic Office and Her Majesty's Stationery Office. © British Crown Copyright (2001-2007). License no. GB AC-002-Garmin. All rights reserved. This product is produced, in part, from products and with the agreement of Imray Laurie Norie and Wilson Ltd. UK. © Garmin Ltd. or its subsidiaries 1995-2007