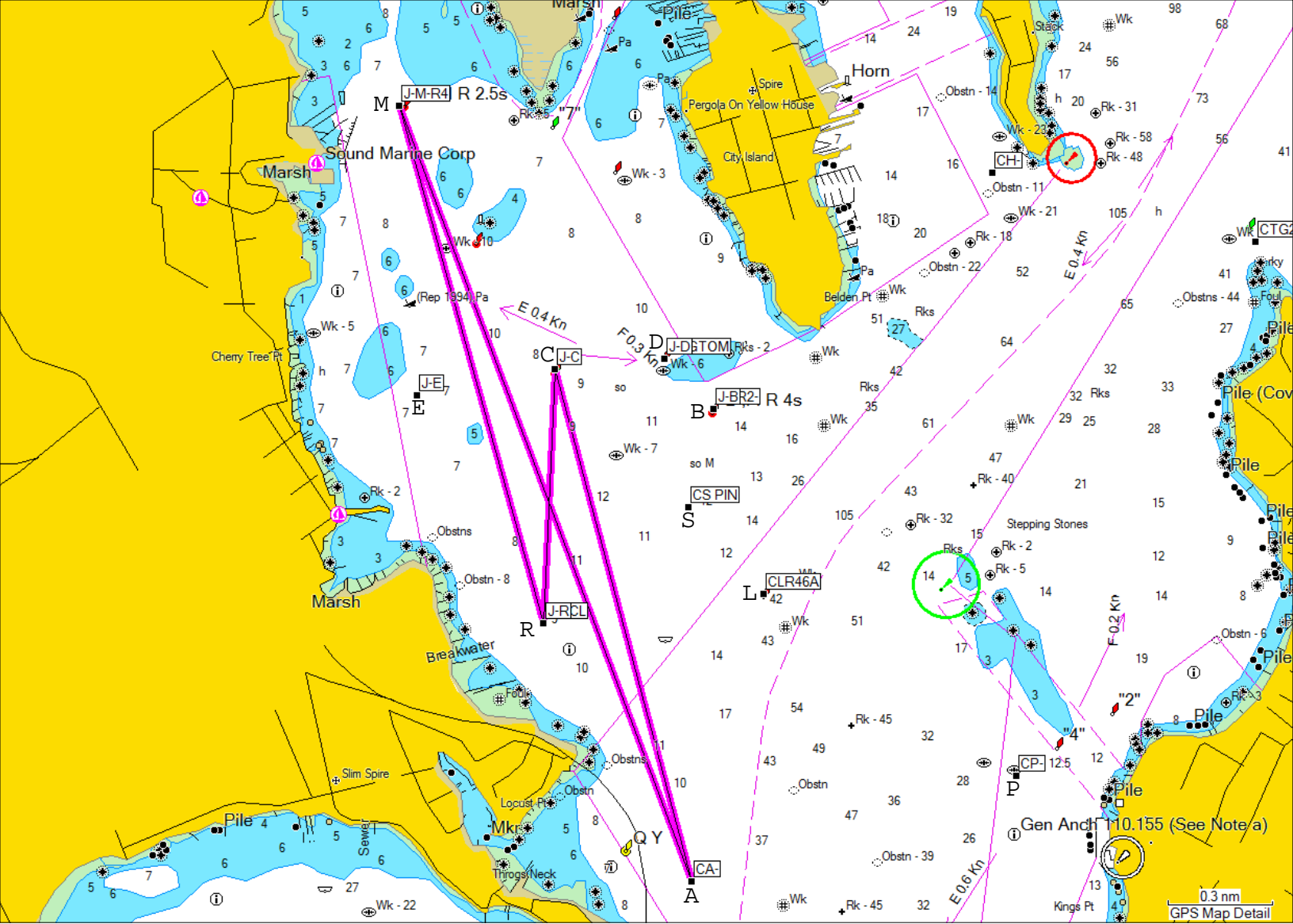


J-24 Fleet 61

Monday Sailing Instructions - 2011

- 1. RULES**
 - 1.1 The Regatta will be governed by the *current* Racing Rules of Sailing.
 - 1.2 This is not a formal race and is not scored, use of the racing rules is for safety and instructional use only.
- 2. NOTICES TO COMPETITORS**
 - 2.1 Notices to competitors will be posted on the fleet group site: <http://groups.google.com/group/j24-fleet-61>
- 3. SCHEDULE OF RACES**
 - 3.1 Monday nights in June, July and August
 - 3.2 Start is at 7pm at the “c” mark
- 4. THE COURSE**
 - 4.1 The course will be announced on VHF channel 71 prior to 7pm.
- 5. MARKS**

A	EBYRA Yellow Race Mark East of Throggs Neck
B	R “2” Big Tom Flasher
C	RG “CL” Flasher South of Cuban Ledge
D	RN “4” Nun at Big Tom
E	EBYRA Yellow Race Mark north of Weir Creek
L	RN “46A” Mid Channel
M	R “4” Flasher NE Corner of Eastchester Bay and the mouth of Hutchinson River
R	EBYRA Yellow Race Mark East of Throggs Neck Bridge Toll Plaza
S	EBYRA Yellow Start mark
- 6. THE START**
 - 6.1 The starting line will be a line perpendicular to the course from “C” to the first mark and approximately 5 boat lengths to either side of “C”.
- 8. THE FINISH**
 - 8.1 The finish will be by rounding “C” leaving the mark to starboard.



Sample Monday Night Course

Signaled:

A(Alpha) to starboard

M(Mike) to Port

R(Romeo) to Port

Finish back at C(Charlie) to Port